

# **SPM Series Mounting Options**

## **Quick Mount System**

The QuickMount System is unique to the Hensortech model SPM swinging paddle material sensor. The SPM can be inserted into the QuickMount plate (Hensortech p/n QM44) and secured by tightening one screw. It is fast and convenient. There is no spinning of the unit.

The QuickMount System has a number of advantages over the conventional 1 1/4" NPT mounting. This is further explained in the model SPM brochure. It should be used in all new locations.



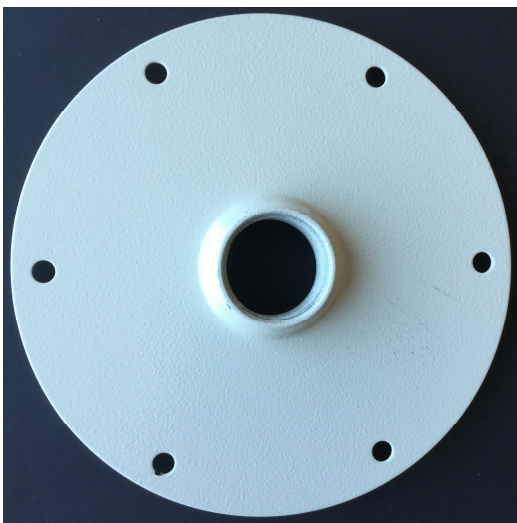
QuickMount Plate p/n QM44



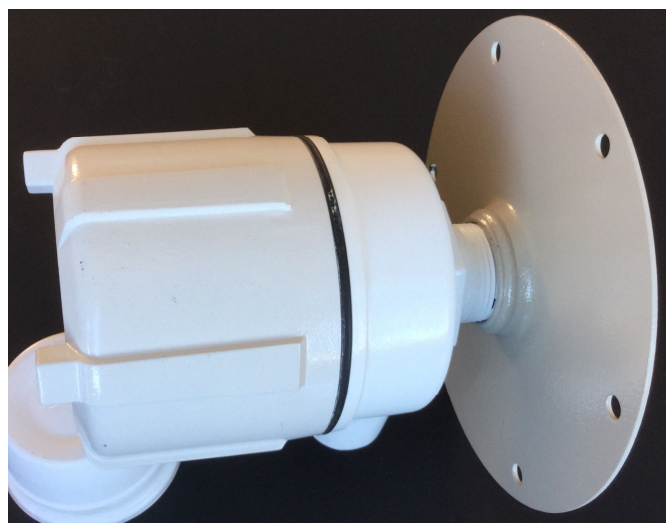
SPM attached to a vessel wall with the QuickMount Plate

## **Conventional Rotary and Vibration Type Mounting**

All rotary and many vibration type bin level indicators use an 1 1/4" NPT (pipe threads) mounting. It is common to use an adapter plate with a 7" BC (bolt circle diameter). This allows the installation of a rotary unit with a 5 1/2" diameter paddle to be installed without entering the bin.



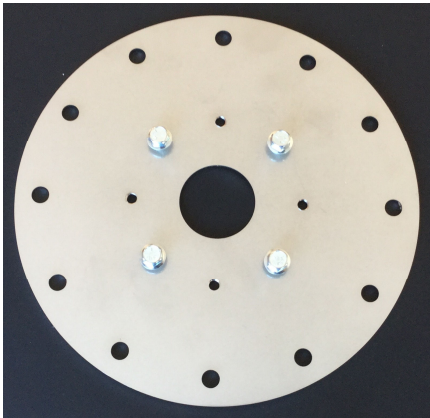
1 1/4" NPT to 7" BC Adapter Plate



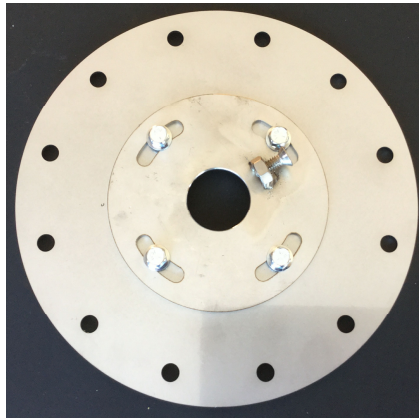
Rotary Type Unit Mounted to 7" BC Adapter Plate

### QuickMount Plate to 7" BC

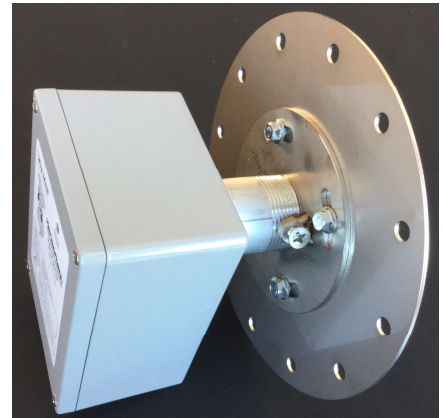
An existing 1 1/4" NPT to 7" BC adapter plate can be removed and replaced with a QuickMount Plate to 7" BC adapter, Hensortech p/n AP01. This will provide the benefits of the QuickMount system in that existing location. Multiple hole choices insure that the SPM can be orientated properly.



QuickMount Plate to 7" BC Adapter Plate p/n AP01



SPM to 7" BC Adapter Plate with the QuickMount Plate Attached

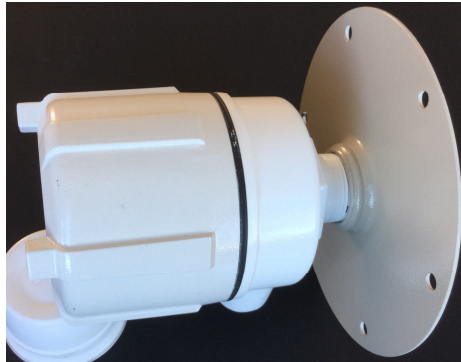


SPM Mounted to the 7" BC Assembly

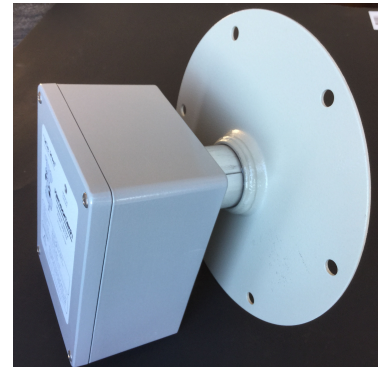
### SPM to 1 1/4" NPT Half Coupling

Sometime an existing location is an 1 1/4" NPT half coupling welded to the vessel wall. In such a case the model SPM can be screwed into the half coupling in place of the rotary unit. There must be room for the SPM's paddle to swing 360 degrees when screwing into place.

Rotary Unit Screwed into an 1 1/4" NPT Half Coupling

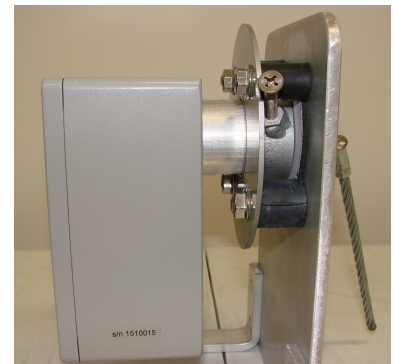


Model SPM screwed into an 1 1/4" NPT Half Coupling



### QM46AV Anti-Vibration Mount

If the mounting surface for the model SPM is subject to extreme vibration, the p/n QM46AV anti-vibration mount should be used.



**Hensortech**  
hensortech.com

Hensortech LLC  
318 Stacey Ann Cove  
Dripping Springs, TX 78620

Phone: 601-270-3416

Email: sales@hensortech.com